

1

2

3

4

A

A

B

B

C

C

D

D

E

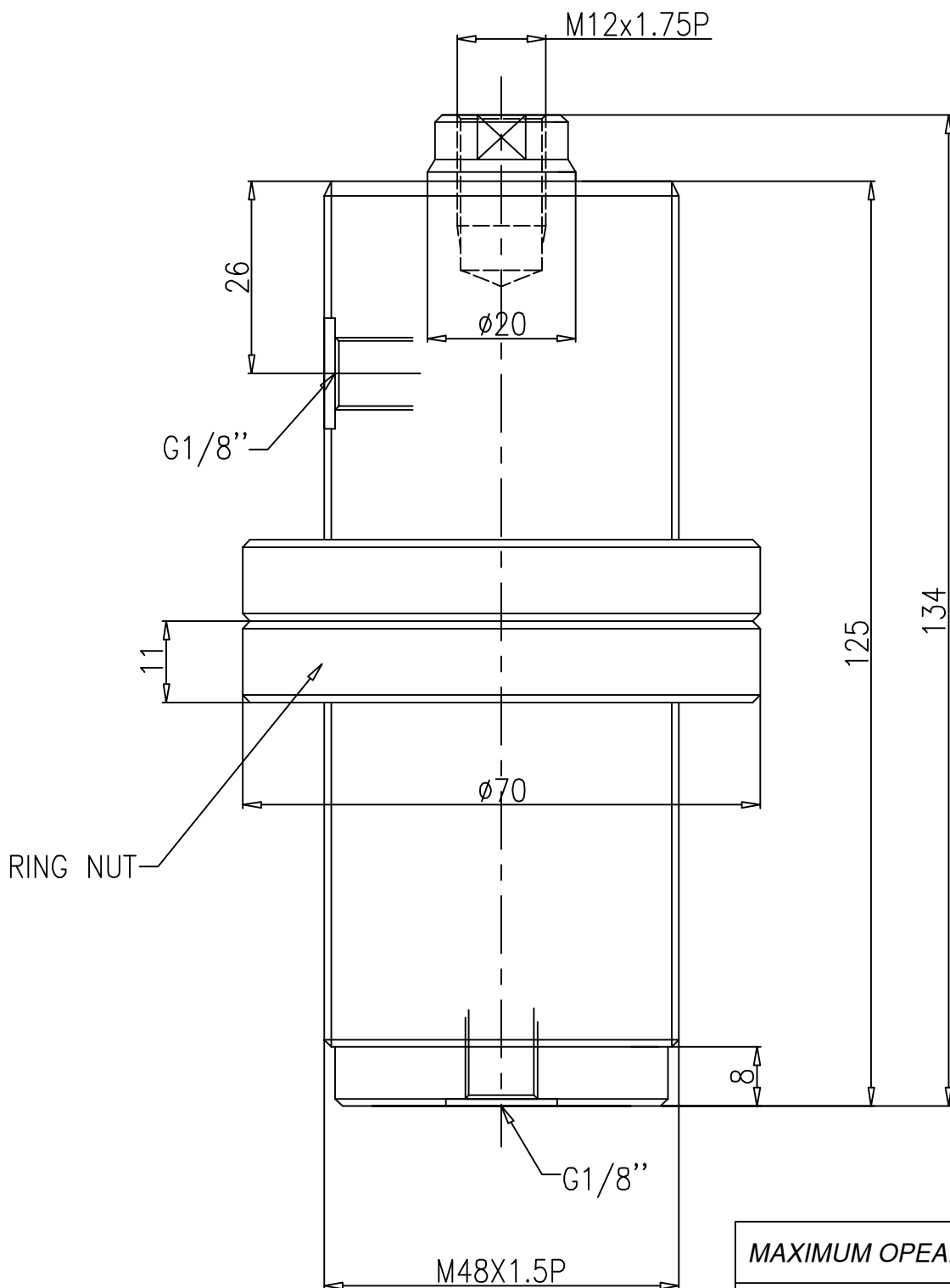
E

F

F

SHEET FORMATS-1, FORMAT NO: F-8-DGN-10, Sht1 of 2 DT.01-11-05 Rew No-00-A4

REVISION					
ZONE	REV	FROM	TO	DATE	APPROVED

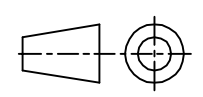


MAXIMUM OPEARATING PRESSURE	250 BAR
MINIMUM OPEARATING PRESSURE	10 BAR
STROKE	40 MM
DISPLACEMENT IN CC	32 cc
PISTON AREA	8.0 SQ.CM

1.0 GENERAL

- 1.1 ALL DIMENSIONS ARE IN MM.
- 1.2 DO NOT SCALE THE DRG.IF IN DOUBT ASK.
- 1.3 ROUND OF THE UNSPECIFIED EDGES.

SURFACE FINISH	▽▽▽▽	▽▽▽	▽▽	▽	~
Ra value μm	0.025 0.05 0.1	0.2 0.4 0.8	1.6 3.2 6.3	12.5 25	50 100



GENERAL TOLERANCES WHERE NOT SPECIFIED

LINEAR - LENGTH OR DIAMETER					ANGULAR-LENGTH IN MM OF SHORT SIDE OF ∠				
0.5-6	6-30	30-120	120-315	315-1000	1000-2000	UPTO 6	6-30	30-120	120-400
±0.1	±0.2	±0.3	±0.5	±0.8	±1.2	±1'	±30'	±20'	±10'

**QUICLOC  
PVT LTD  
B'lore - 70**

SCALE 1;1	TITLE MINI THREADED BODY CYLINDER D/A BORE-ø32XRODø-20XSTROKE-40 mm	MATERIAL XXX	SHEET NO 1 OF 1
DESIGN TIRUMAL 28-10-05	MACHINE TYPE	GROUP NO.	REPLACES
DRAWN TIRUMAL 14-11-05	CUSTOMER:	SUPERCEDED BY -	-
CHECKED		DRAWING NO.	A52306
APPROVED			

1

2

3

4