

1

2

3

4

A

A

B

B

C

C

D

D

E

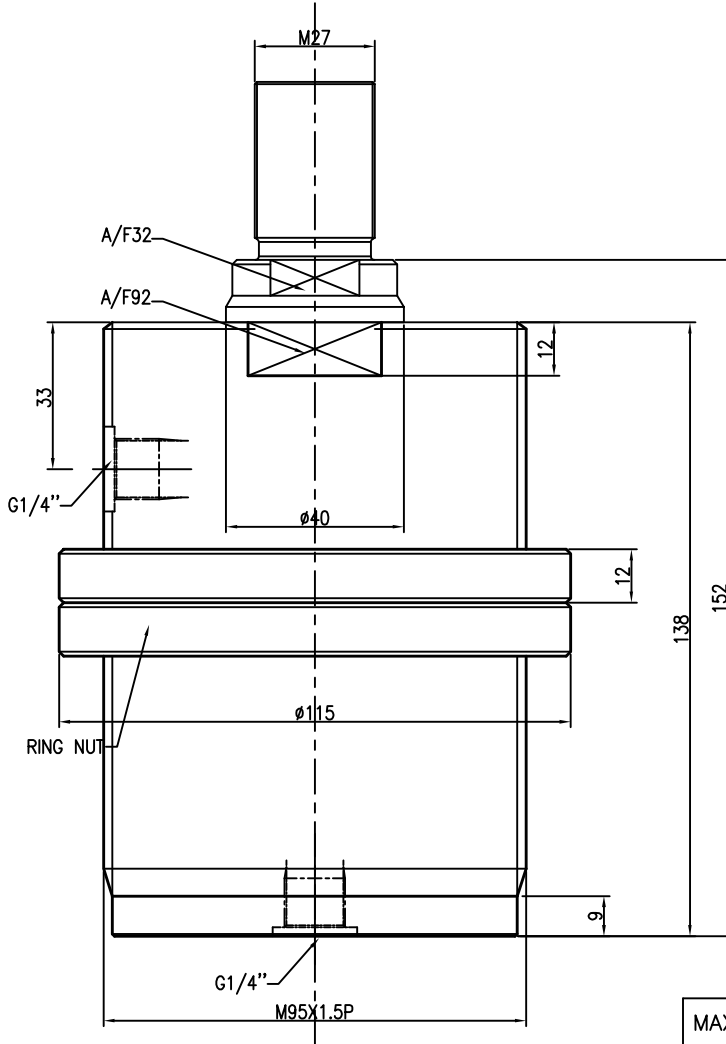
E

F

F

SHEET FORMATS-1, FORMAT NO: F-8-DGN-10, Sht1 of 2 DT.01-11-05 Rew No-00-A4

REVISION					
ZONE	REV	FROM	TO	DATE	APPROVED



MAXIMUM OPERATING PRESSURE	250 BAR
MINIMUM OPERATING PRESSURE	10 BAR
STROKE	40 MM
DISPLACEMENT IN CC	124.8 cc
PISTON AREA	31.2 SQ.MM

1.0 GENERAL

- 1.1 ALL DIMENSIONS ARE IN MM.
- 1.2 DO NOT SCALE THE DRG. IF IN DOUBT ASK.
- 1.3 ROUND OF THE UNSPECIFIED EDGES.

SURFACE FINISH	▽▽▽▽	▽▽	▽	▽	~	
Ra value μm	0.025 0.05 0.1	0.2 0.4 0.8	1.6 3.2 6.3	12.5 25	50 100	

GENERAL TOLERANCES WHERE NOT SPECIFIED

LINEAR - LENGTH OR DIAMETER						ANGULAR-LENGTH IN MM OF SHORT SIDE OF ∠			
0.5-6	6-30	30-120	120-315	315-1000	1000-2000	UPTO 6	6-30	30-120	120-400
±0.1	±0.2	±0.3	±0.5	±0.8	±1.2	±1'	±30'	±20'	±10'

QUICLOC PVT LTD B'lore - 70

SCALE	1;1	TITLE	MINI THREADED BODY CYLINDER D/A	MATERIAL	XXX	SHEET NO	1 OF 1
DESIGN	TIRUMAL	DATE	28-10-05	GROUP NO.		REPLACES	
DRAWN	TIRUMAL		14-11-05	SUPERCEDED BY	-	-	
CHECKED				DRAWING NO.	A52311		
APPROVED				CUSTOMER:			

1

2

3

4