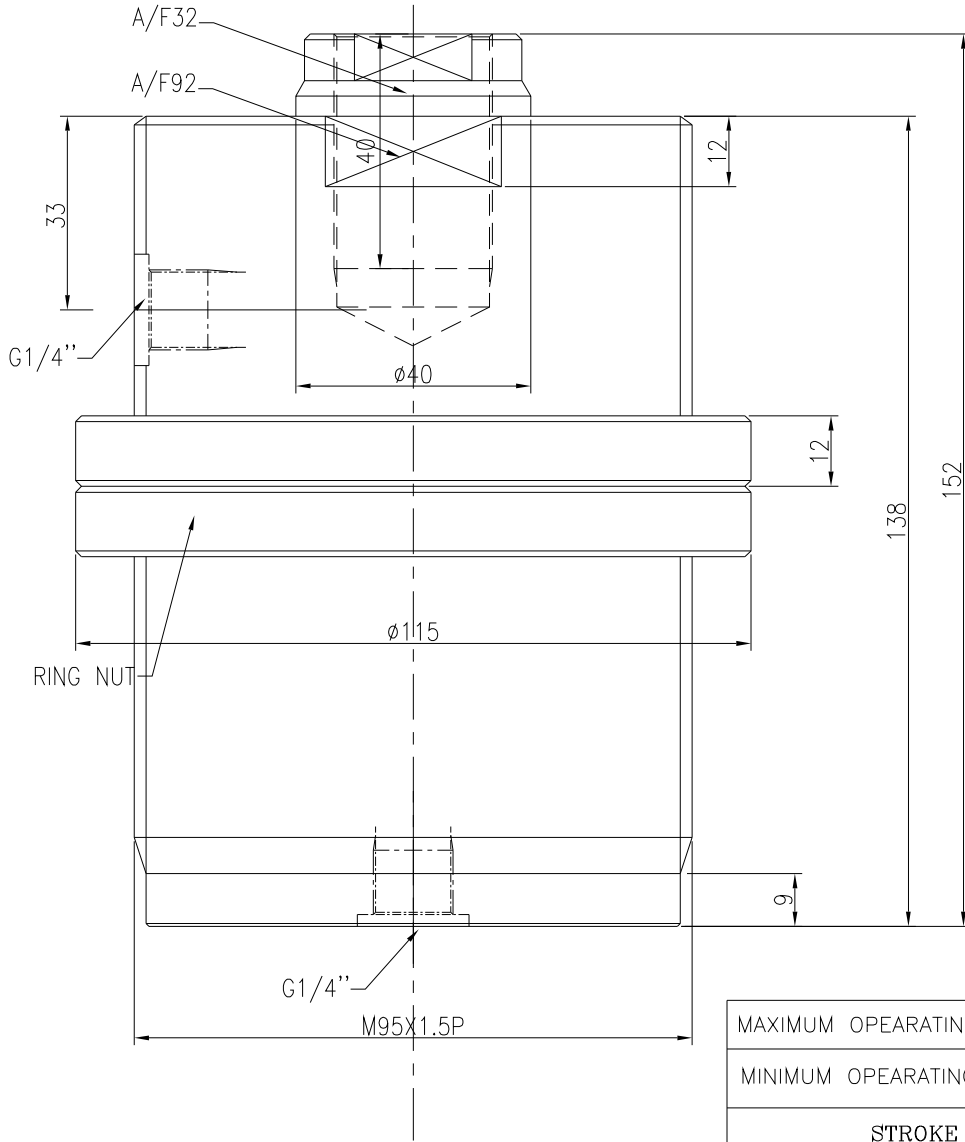


SHEET FORMATS-1, FORMAT NO: F-8-DGN-10, Sht1 of 2 DT.01-11-05 Rew No-00-A4

REVISION						
ZONE	REV	FROM	TO	DATE	APPROVED	



MAXIMUM OPERATING PRESSURE	250 BAR
MINIMUM OPERATING PRESSURE	10 BAR
STROKE	40 MM
DISPLACEMENT IN CC	124.8 cc
PISTON AREA	31.2 SQ.CM

1.0 GENERAL

- 1.1 ALL DIMENSIONS ARE IN MM.
- 1.2 DO NOT SCALE THE DRG. IF IN DOUBT ASK.
- 1.3 ROUND OF THE UNSPECIFIED EDGES.

SURFACE FINISH													
Ra value μ m	0.025	0.05	0.1	0.2	0.4	0.8	1.6	3.2	6.3	12.5	25	50	100

GENERAL TOLERANCES WHERE NOT SPECIFIED

LINEAR - LENGTH OR DIAMETER						ANGULAR-LENGTH IN MM OF SHORT SIDE OF \angle			
0.5-6	6-30	30-120	120-315	315-1000	1000-2000	UPTO 6	6-30	30-120	120-400
± 0.1	± 0.2	± 0.3	± 0.5	± 0.8	± 1.2	$\pm 1'$	$\pm 30'$	$\pm 20'$	$\pm 10'$

**QUICLOC
PVT LTD
B'lore - 70**

SCALE 1;1	TITLE MINI THREADED BODY CYLINDER D/A	MATERIAL XXX	SHEET NO 1 OF 1
DESIGN TIRUMAL	DATE 28-10-05	GROUP NO.	REPLACES
DRAWN TIRUMAL	DATE 14-11-05	SUPERCEDED BY -	REPLACES -
CHECKED	CUSTOMER:	DRAWING NO. A52312	
APPROVED			